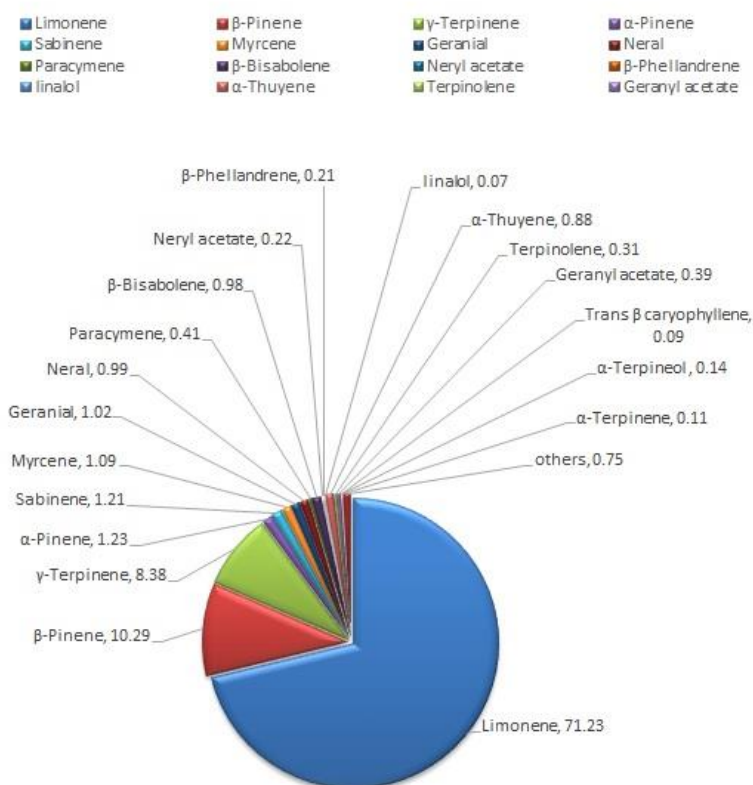


## 19abinosima-lemon(FCF)



abinosimalemonFCF			
ピーク#	保持時間		面積%
1	0	Limonene	71.23
2	0	β-Pinene	10.29
3	0	γ-Terpinene	8.38
4	0	α-Pinene	1.23
5	0	Sabinene	1.21
6	0	Myrcene	1.09
7	0	Geranial	1.02
8	0	Neral	0.99
9	0	Paracymene	0.41
10	0	β-Bisabolene	0.98
11	0	Neryl acetate	0.22
12	0	β-Phellandrene	0.21
13	0	linalol	0.07
14	0	α-Thuyene	0.88
15	0	Terpinolene	0.31
16	0	Geranyl acetate	0.39
17	0	Trans β caryophyllene	0.09
18	0	α-Terpineol	0.14
19	0	α-Terpinene	0.11
		others	0.75
			100