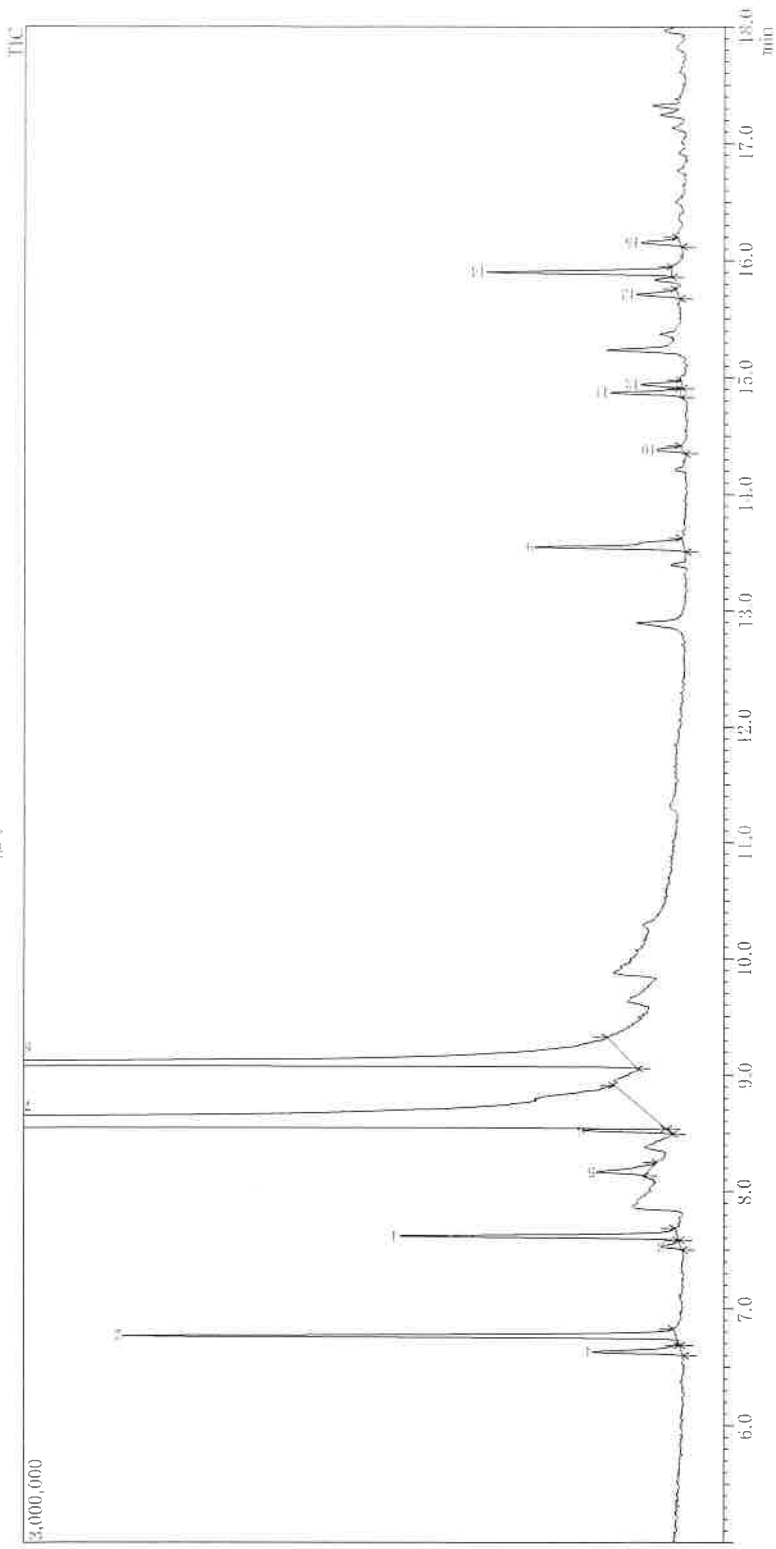


轴子



ピーク番号、TIC

ピーク 番号	保留時間	面積	面積%	高さ	高さ%	A/H	化合物
1	6.629	823534	0.31	382190	0.35	2.15	Bicyclo[3.1.0]hexane, 4-methyl-1-(1-methylthyl)-, dihydro deriv.
2	6.665	4008033	1.49	2371968	2.16	1.69	Bicyclo[3.1.0]hept-2-ene, 2,6,6-trimethyl-, (1r)-
3	7.630	172799	0.06	65716	0.06	2.63	Bicyclo[3.1.0]hexane, 1-methylene-1-(1-methylthyl)-
4	7.617	2177420	0.81	1188520	1.08	1.83	hexa-1-ene
5	8.467	599195	0.22	290146	0.20	2.72	Bicyclo[3.1.0]hex-2-ene, 2-methyl-5-(1-methylthyl)-
6	8.520	586153	0.22	355696	0.32	1.65	Benzene, 1-methyl-2-(1-methylthyl)-
7	8.599	230899365	85.84	92679758	84.36	2.49	Limonene
8	9.092	21702906	9.18	10207244	9.29	2.42	1-Carene, (1S,3S,6R)-(-)
9	13.517	1550329	0.58	614413	0.59	3.41	1,5-Heptadiene, 9,5-dimethyl-3-methylene-
10	14.383	222252	0.08	110527	0.10	2.01	Cyclohexane, 1-ethyl-1-methyl-2,4-bis(1-methylthyl)-
11	14.871	569692	0.21	304989	0.28	1.87	cis-alpha-Bisabolene
12	14.940	347117	0.12	175775	0.18	1.87	gamma-Elementene
13	15.712	384575	0.14	180853	0.16	2.13	1,6-Cyclodecadiene, 1-methyl-5-methylene-8-(1-methylthyl)-, [s-(E,E)]-
14	16.900	1592114	0.59	706591	0.73	2.00	gamma-Elementene
15	16.155	363191	0.14	169152	0.15	2.15	Bicyclo[4.1.0]-3-heptene, 2-isopropenyl-5-isopropyl-7,7-dimethyl-
		265998676	100.00	109856638	100.00		